

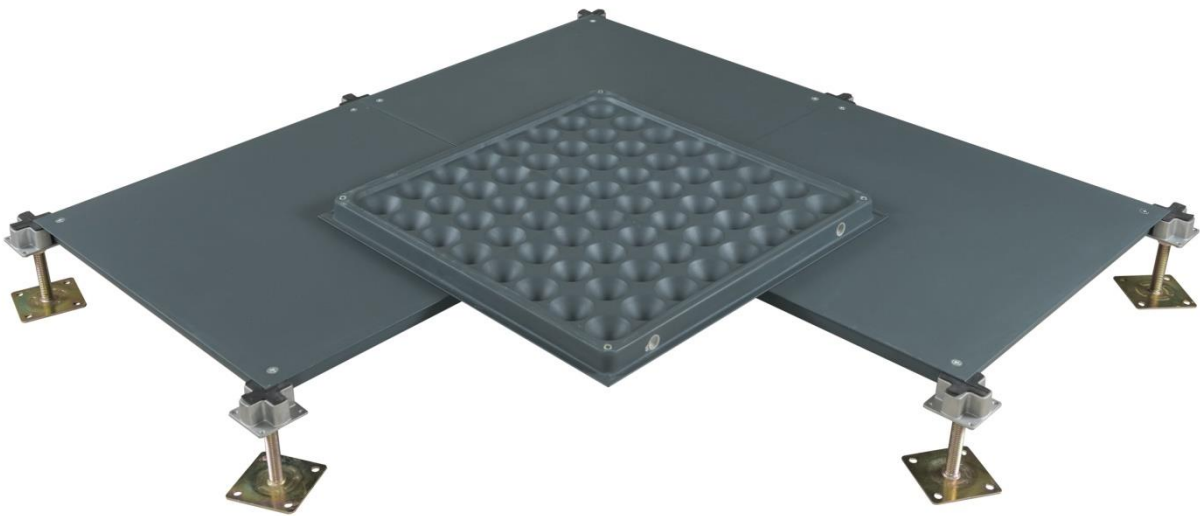
Abeite Raised Floor



Bare Finish Steel Raised Floor

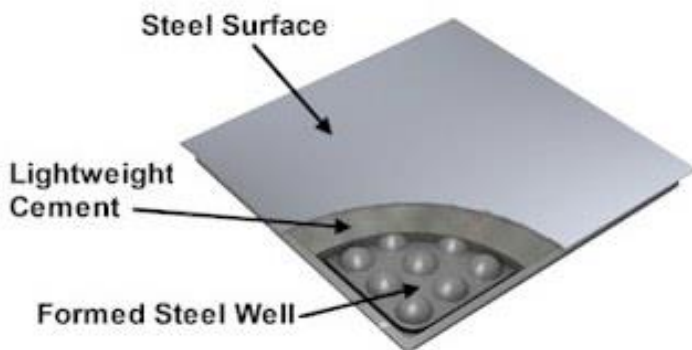
Abeite Raised Floor

Abeite Bare Finish Steel Raised Floor is a new patent “cross strengthening rib” and “concave rib structure”, which can enhance 10-30% more loading capacity. From the selection of materials, procurement, production, packaging, are following with the Chinese and PSA MOB PS/SPU、DIN EN 12825 specifications.



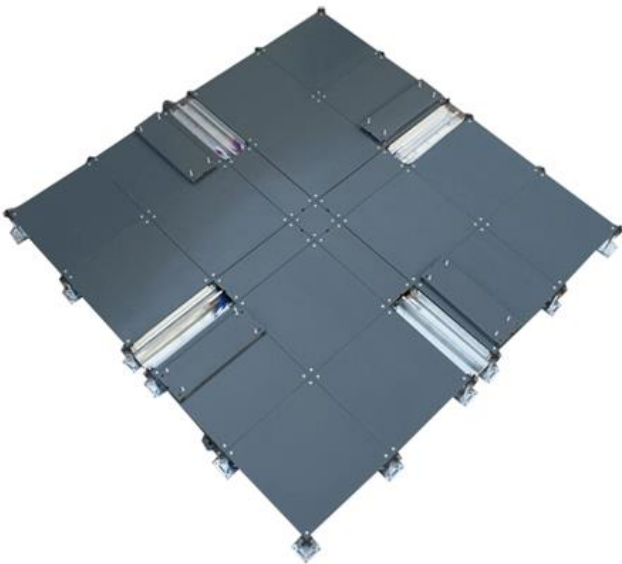
Construction:

Bare Steel Raised Floor is manufactured from cold-rolled steel resistance welded, lightweight cement infilled. This raised floor system is composed of panels, pedestals, anti-vibration gasket and screws. The panel is placed on top of the pedestals with an anti-vibration gasket and then locked in place with the screws in the corner-lock holes.



Abeite Raised Floor

Type:	FS662-2000
Finished Floor Height:	50-1000mm
Panel Size:	500*500*28mm、600*600*33mm、610*610mm
Edge Trim Type:	Bent edge/Cut edge
Trunking	Available
Grommet Hole	Available
Installation:	Without or With Stringer System



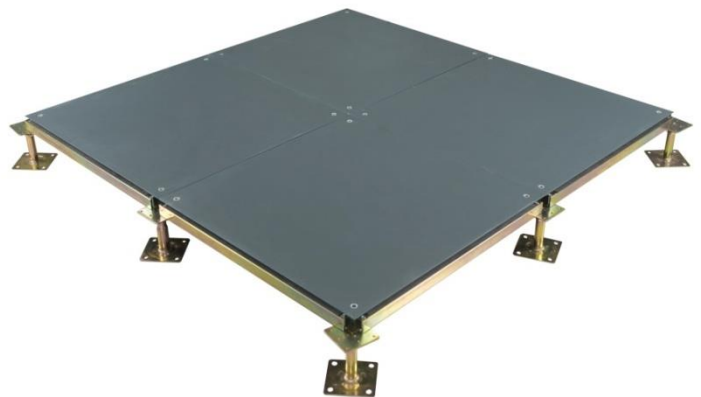
Intelligent Network Raised Floor



Low Profile Raised Floor



Cutout Bare Panel



Bolted Stringer System

Abeite Raised Floor

Characteristics:

- Epoxy paint for lifetime protection;
- Tolerance of panel size is 0-0.40mm; Tolerance of panel thickness is ± 0.30 mm; Un-flatness is ≤ 0.60 mm;
- The load performance is strong;
- Class A flame spread & smoke-developed index
- OEM is available;

Applications:

Office building, intelligent office environment, meeting room, commercial and industrial bureau, government, places that have requirements of dust-proof and water-proof, fields with requirements, usually used with square carpet.

Specification:

Type	Size	Concertrated Load Defleation ≤ 2.5 mm			Uniform Load	Ultimate Load	System Resistance
	mm	LBS	KN	KG	KN/m ²	KN	Ω
FS662	600*600 (500*500/ 610*610 is optional)	662	2.95	300	12.50	8.85	1.0x10 ⁶ -1.0x10 ⁹
FS800		800	3.56	363	16.10	10.68	
FS1000		1000	4.45	454	23.00	13.35	
FS1250		1250	5.56	567	33.00	16.68	
FS1500		1500	6.67	680	34.50	20.02	
FS2000		2000	8.90	906	46.00	26.70	

Abeite Raised Floor

Understructures:

Product name:	Pedestal
Type:	Flat Head
Height:	FFH50-600mm
Top plate:	75*75*3.0mm
Base plate::	95*95*2.0mm
Threaded rod:	M18/20
Surface:	Cold galvanizing Hot galvanizing Powder coated
Gasket:	Without



Product name:	Pedestal
Type:	Cross Head (Aluminum and steel is optional)
Height:	FFH50-600mm
Top plate:	70*70mm
Base plate::	95*95*3.0mm
Threaded rod:	M18/20
Surface:	Cold galvanizing Hot galvanizing Powder coated
Gasket:	With



Abeite Raised Floor





Changzhou Abeite Computer Room Equipment Co.,Ltd

Add: No. 108, Chaoyang Village, Hengshanqiao Town, Wujin District,

Changzhou City, Jiangsu Province, China

Tel: +86(519)86056270

Fax: +86(519)86056270

E-mail: info@abeiteraisedfloor.com

Web: www.abeiteraisedfloor.com