

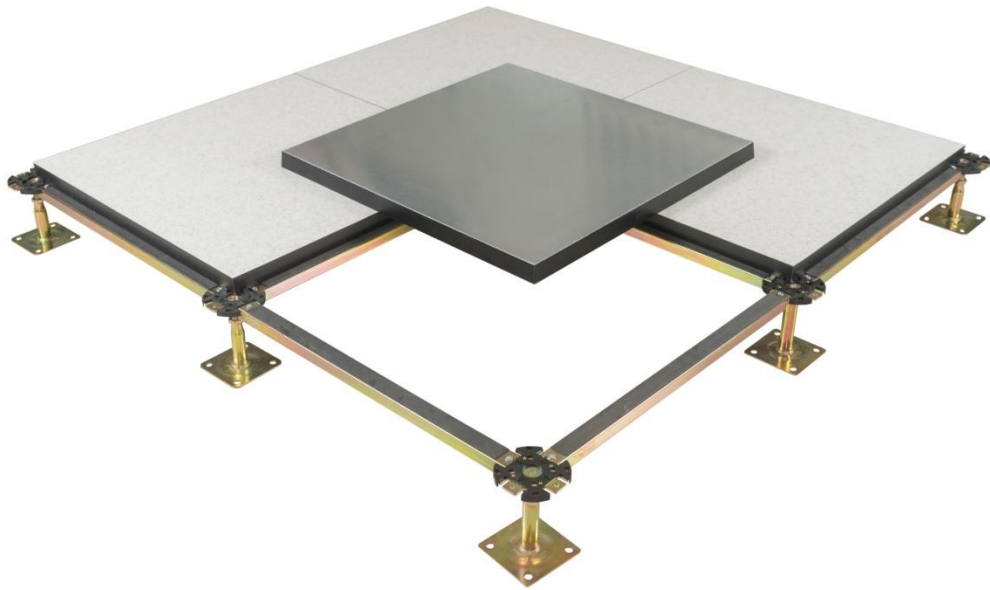


Abeite Raised Floor

Calcium Sulphate Raised Floor
Фальшпол из сульфата-кальция

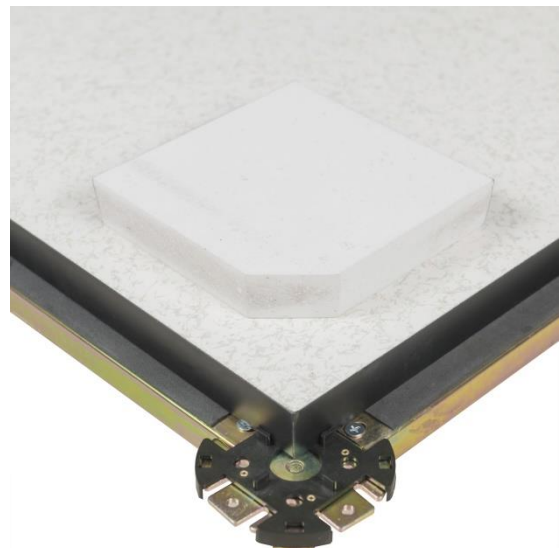
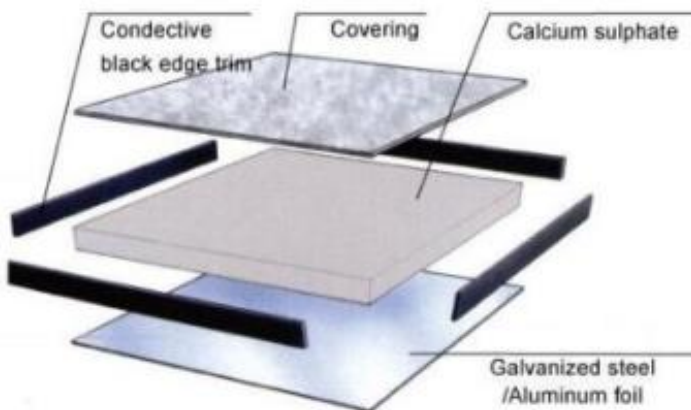
Abeite Raised Floor

Abeite Calcium Sulphate Raised Floor is hot selling product, it's made by 100% green environmental protection natural gypsum powder. From the selection of materials, procurement, production, packaging, are in compliant with the Chinese and PSA MOB PS/SPU、DIN EN 12825 specifications. With the German brands Mero and Lindner as the goal, to provide our customers with high-quality products.



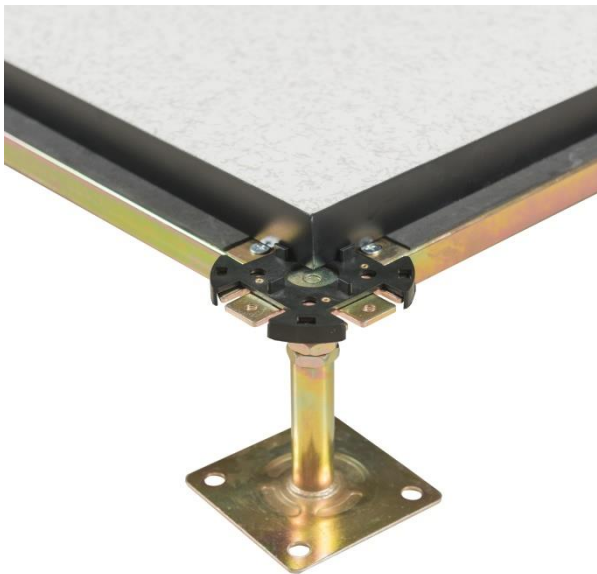
Construction:

Calcium Sulphate Raised Floor is based on a high-density calcium panel, finished with HPL/PVC/Ceramic and other covering, galvanized steel sheet or aluminum foil to bottom, the four edges are wrapped with conductive PVC trims.



Abeite Raised Floor

Finished Floor Height:	100-2000mm
Density:	1500-1700 kg/m ³
Panel Size:	500*500mm、600*600mm and special size
Core Panel Thickness:	22-38mm
Upper Covering:	Bare、1.0-2.0mm Anti-static Laminate HPL、2.0-3.0mm PVC、10mm Cermic、Marble、Granite、Nature Wood、and etc.
Under Covering:	Bare、0.3-2.0mm Galvanized steel、0.1-2.0mm Aluminum Foil
Installation:	Without or With Stringer System



With Stringer System



Without Stringer System

Characteristics:

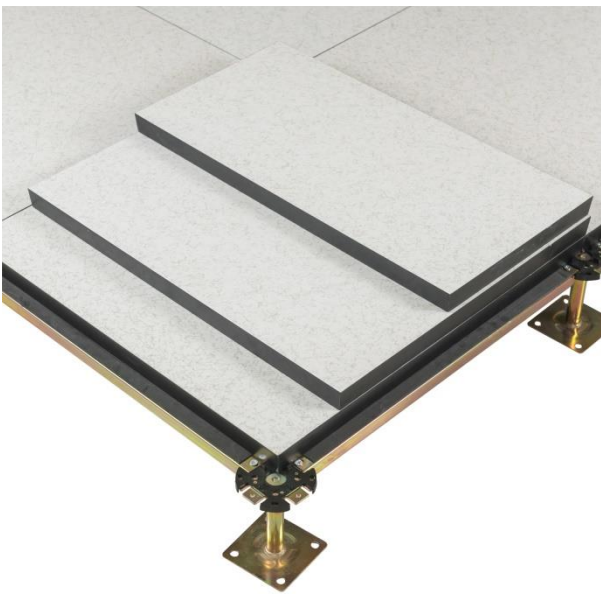
- Non-toxic natural product, 100% green environmental protection natural gypsum power;
- 90% recycled can meet the requirement of LEED evaluation for projects;
- Tolerance of panel size is 0-0.40mm; Tolerance of panel thickness is ± 0.30 mm; Un-flatness is ≤ 0.60 mm;

Abeite Raised Floor

- The load performance is strong, and the anti-static performance is excellent.
- Good performance to Moisture resistance、Anti-corrosion、Class A1 Fire resistance(baseboard);
- OEM and customization are available;

Applications:

Calcium Sulphate Raised Floor is widely in Data Centers、Commercial Buildings、Educational Facilities、Clean Rooms、Control Rooms、Libraries and places where require anti-static environment or have many wires.



Special size panel



Customized covering

Specification:

Type	Load Level	Size	Concertrated Load Defleation≤2.5mm		Uniform Load	Ultimate Load	System Resistance
		mm	LBS	KN	KN/m ²	KN	Ω
FS800	Medium Grade	600*600 (500*500 is optional)	800	3.56	16	10.68	1.0x10 ⁶ -1.0x10 ⁹
FS1000	Heavy Grade		1000	4.45	23	13.35	
FS1250	Extra Heavy Grade		1250	5.56	33	16.68	
FS1500	Industrial Grade		1500	6.67	43	20.02	

Abeite Raised Floor

Understructures:

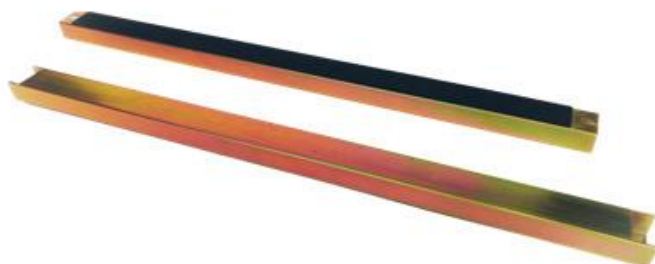
Product Name:	Round Head Pedestal
Suggested Height:	FFH100-600mm
Tube:	Φ21/1.5mm
Top Plate:	90*90*3.0mm
Base Plate::	95*95*2.0mm
Threaded Rod:	M18/20/22
Threaded Rod Length:	80mm/100mm and more
Surface:	Cold galvanizing Hot galvanizing Powder coated
Gasket:	With



Product Name:	Heavy-duty pedestal
Suggested Height:	FFH600-2000mm
Tube:	Φ32/1.5mm
Top Plate:	90*90*3.0mm
Base Plate::	95*95*3.0mm
Threaded Rod:	M18
Threaded Rod Length:	80mm/100mm and more
Surface:	Cold galvanizing Hot galvanizing Powder coated
Gasket:	With



Product Name:	Stringer
Size:	540*31*22mm 1140*31*22mm
Steel thickness:	1.0/1.2mm
Surface:	Cold galvanizing Hot galvanizing Powder coated
Gasket:	With



Abeite Raised Floor





Changzhou Abeite Computer Room Equipment Co.,Ltd

Add: No. 108, Chaoyang Village, Hengshanqiao Town, Wujin District,

Changzhou City, Jiangsu Province, China

Tel: +86(519)86056270

Fax: +86(519)86056270

E-mail: gail@abeiteraisedfloor.com

Web: www.abeiteraisedfloor.com